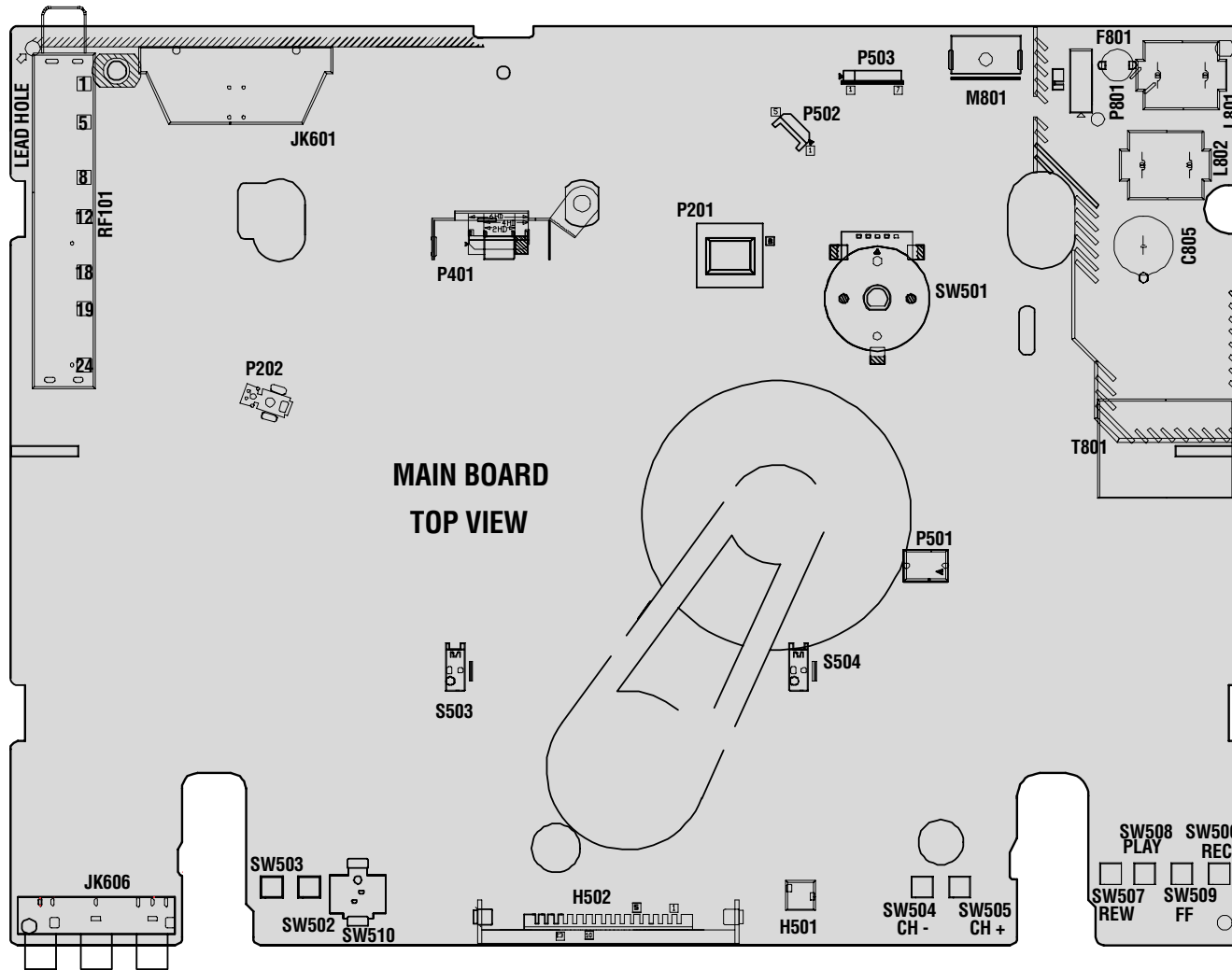


2. Electrical adjustments - Réglages électriques - Elektrische Einstellungen Regolazioni elettriche - Ajustes eléctricos

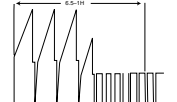
2.1 Test points and adjustment overview- Emplacement des points test et des réglages
Testpunkte und Abgleich- Übersicht - Punti test e panoramica generale delle regolazioni
Punto de prueba y emplazamientos de los ajustes.



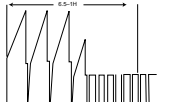
2.2 On screen display (Main board) - OSD : Affichages sur l'écran (platine principale)
OSD : Hauptleiterplatte - OSD : Visualizzazione su Schermo - OSD : Visualización en la pantalla

N	Item	Mode & Signal	Test equipment	Test point	Description
2.2.1	OSD chroma oscillator		Frequency counter	R542	Check for 17.73447MHz ±443HZ

2.3 Measurements Servo Section(Main Board) - Vérifications sur les circuits d'asservissements-
Messungen Servotell - Controlli parte Servo - Verificiones para parte Servo.

N•	Item	Mode & Signal	Test equipment	Test point	Adjustment point	Description
2.3.1	Oscillator frequency		Frequency counter	IC501 pin38	None	Confirm $f = 16.0\text{MHz} \pm 480\text{Hz}$
2.3.2	Drum FF(Flip Flop)	PB/REC	Oscilloscope	IC501 pin 18	None	Check for $40\text{ms} \pm 10\mu\text{s}$
2.3.3	Capstan FG frequency	PB/REC(SP)	Frequency counter	IC501 pin 87	None	Check for $f = 757\text{Hz} \pm 10\text{Hz}$
2.3.4	Head switching	PB	Dual trace Oscilloscope Trigger ext. P503/4 (Drum FF)	Scart JK601 pin19	by software setup	<ol style="list-style-type: none"> 1.Insert a protected test cassette into the video recorder. 2.The VCR will automatically enter the play mode. 3.Next enter the service mode. 4.Press <5>-key on the remote control. 5.The video control data is displayed. 6.Press-<Rec>-key either on remote control or on the front panel. 7.<0> key on the remote control will release the video control data mode. 

2.4 Video signal processing - Traitement video - video Signalteil - Elaborazione segnale video
Tratamiento video

N•	Item	Mode & Signal	Test equipment	Test point	Adjustment point	Description
2.4.1	CVBS EE level	Select AV1 REC PAL PAL grey scale 1Vpp AV1 pin20	Oscilloscope	AV1 pin19	None	Check for $VBS = 1\text{Vpp} \pm 0.1\text{Vpp}$ $BURST = 300\text{mVpp} \pm 70\text{mVpp}$ 
2.4.2	CVBS EE level	REC SECAM Colour bar 1Vpp AV 1 pin20	Oscilloscope	AV1 pin19	None	MAGENTA BAR= $210\text{mVpp} \pm 20\text{Vpp}$

2.5 Audio signal processing - traitement audio - Audio Signalverarbeitung
Elaborazione segnale audio - Procesamiento audio

N•	Item	Mode & Signal	Test equipment	Test point	Adjustment point	Description
2.5.1	Bias oscillator frequency & level	REC (Without signal)	Oscilloscope	P202 pin1	None	Check for $70\text{KHz} \pm 5\text{KHz}$ $50\text{Vpp} \pm 5\text{Vpp}$